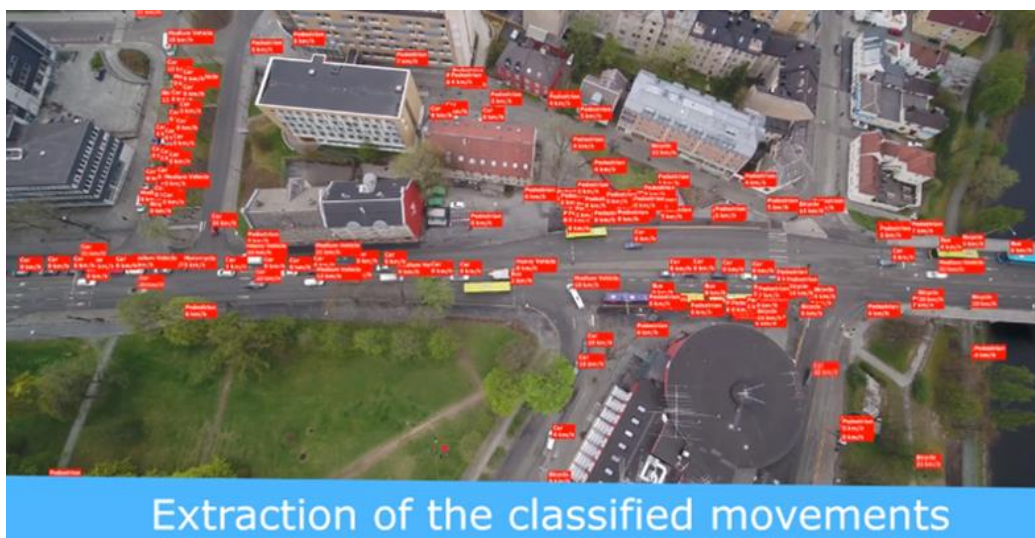


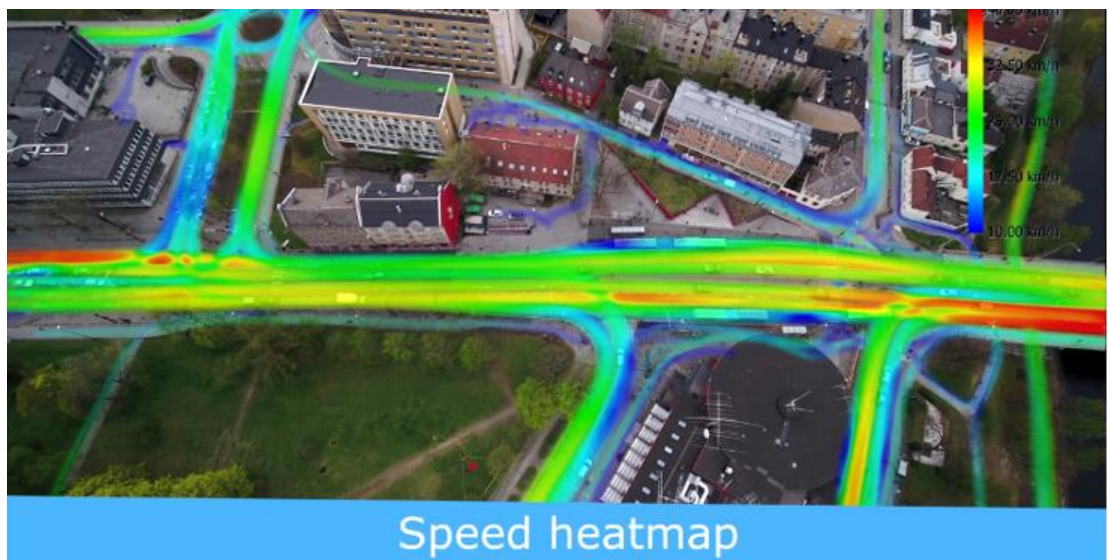


## What kind of exports can I expect from SWISSTRAFFIC.ai Viewer?

OD matrix, trajectories movement dynamics, traffic region crossing events, Gap-Time/Time-to-Follow, traffic survey video and much more!

**SWISSTRAFFIC.ai Viewer** is a desktop application working with a traffic video that you shoot. Based on AI used in our **SWISSTRAFFIC.ai platform**, objects and their trajectories are detected within the video. Thanks to SWISSTRAFFIC.ai Viewer you can visualize data from the video including the possibility to export raw data or statistics out of it. Set your own **gates, traffic** or **action region** or display information about each object, such as **speed, acceleration**, position within WGS84 or UTM and their trajectories. Export all above mentioned data from your video to a .CSV or .XLS file or make a visualized export out of your video so you can easily present the data to your colleagues or clients!

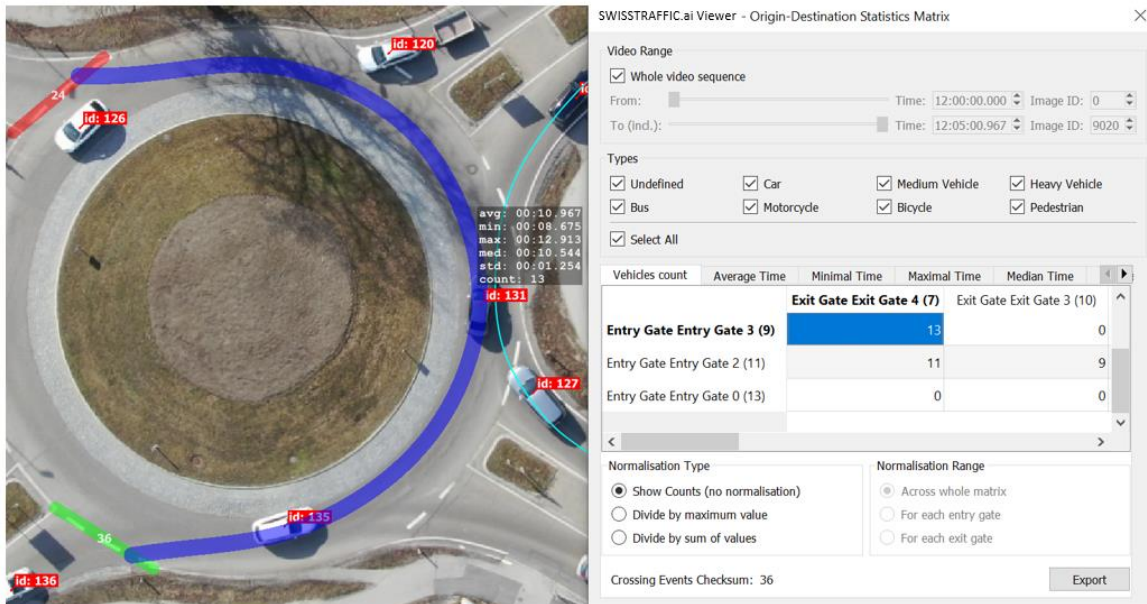




In SWISSTRAFFIC.ai Viewer some of the data might be exported to a .CSV or .XLS file. For more information about each export, see the list below:

- **Trajectories Movement Dynamics** - Export information about each object and its trajectory within gates that you have set.
- **Turning Movement Counts** (export traffic analysis) - Export gate crossing events based on your own time-lapse.
- **Gate Crossing Events** - Stop manual counting, set your own virtual gates that will count and categorize objects for you.
- **Traffic Region Crossing Events** - Set your own traffic region and analyse behaviour within the region (entry/exit time, average speed, acceleration or stationary time)
- **Export trajectories** - Get information about each object for each millisecond of the video.

- **Gap-Time/Time-to-Follow** - Export data about the distance between cars and time to follow of objects on roundabouts or intersections.
- **Origin-Destination Statistics** - Visualize statistic data about relation between two or more gates and export your own OD matrix.



In case of **visualized data**, you can use the possibility to:

- **Export traffic survey snapshot** - Export gates, regions and other statistical data, that you can see in the video, to one **simple picture**.
- **Export traffic survey video** - Export gates, regions and other statistical data that might be visualized in the **video**. This might help you to **ease interpretation** of your data.



